

RENOVATION NEWS

UPDATE!

WE'RE MOVING! ...to the other side of the building that is.
The LLD will close to the public starting on October 19th

CLOSED: WEDNESDAY, OCT. 19 - UNTIL FURTHER NOTICE*

The LLD remains temporarily closed until a safety control panel can be replaced. We anticipate this to be completed next week. Please stay tuned for re-opening updates on lislelibrary.org & LLD social media (updated Oct. 28, 2022).

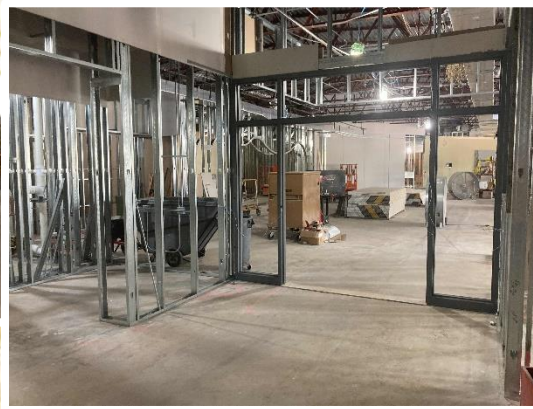
WHO: LLD staff, construction, design, and moving teams

WHAT: A closure and coordinated move from Phase 1 to Phase 2 of the renovation involving staff, offices, collections, and service points

WHERE: Moving from the east end of the building to the west end of the building

WHEN: Beginning Wednesday, October 19

WHY: This renovation was planned as a two-phase renovation to allow for maximum patron convenience. Keeping one half of the LLD open, while the other half is under construction, kept most service points operational and collections accessible. With minimal closure periods, the LLD has successfully served its residents while undergoing a major renovation.



MORE DETAILS: When the LLD reopens to the public, patrons will park and enter the Library through the main entrance on Front Street. The Library will feature collections (and staff) in a shared space – much like the configuration in Phase 1 where Youth, Adult, and Teen collections/departments were consolidated. This configuration allows us to provide the maximum amount of materials and services during Phase 2 construction.